

# PARISHSCOPE

A PUBLICATION OF THE JUNIOR LEAGUE OF SHREVEPORT-BOSSIER, INC. | WINTER 2023

*Volume 57, Issue 1*





# Recognize The Best Times!



Expandable  
Diamond Band



Paraiba Tourmaline



"Blaze" Cut Diamond Band

Multi-Shape  
Rosecut Diamonds



Oval Diamond Bangle

Call, email or come by for pricing.  
[sid@sidpotts.com](mailto:sid@sidpotts.com)



**SID POTTS, INC.**

*Private Jeweler ~ Diamond & Estate Broker*

*Be Original.*

[www.sidpotts.com](http://www.sidpotts.com) | 318.797.2929



MEMBER  
**AMERICAN GEM  
SOCIETY**

8535 Business Park Dr. | Shreveport, LA 71105 | Monday-Friday 9:00am - 5:30pm & Saturday 10:00am - 2:00pm

# FROM THE EDITOR

Emily Hamann



Cheers to 2023, readers! I hope everyone's holidays were warm, merry, and free from busted water pipes! If you're from Louisiana, you know that the next holiday season before Valentine's Day is Mardi Gras. If you're new to the area, get ready for Bal season and parades. The good times are indeed about to roll!

This winter issue is great because we get to kick off the year with Designer Bag Bingo information and recaps from some of our ever-so-popular fall events.

Along with some of our recurring favorite articles, I'm excited to highlight some of our Junior League business owners. This issue will have a special shoutout for our JLSB Black-owned businesses in honor of Black History Month. So be sure to check them out, shop small, and support the community.

Finally, check out that cover photo! I had the opportunity to work with bakers Sarah Lowder and Maria Woodley to photograph some Junior League cookbook recipes that will be the perfect Valentine's Day treat for classrooms, offices, or that special someone!



JuniorLeagueSB



@JuniorLeagueSB



Junior League of Shreveport-Bossier



facebook.com/JLSB.org



youtube.com/user/JuniorLeagueSB

# TABLE OF CONTENTS

- 4 Letter from the President
- 5 Important Dates
- 6 1933 Society
- 8 Letter from the Sustainer Advisor
- 8 Sustainer of the Year Award Guidelines
- 9 Volunteer of the Year Nominations
- 10 Provisional Update
- 11 News from the Nominating Committee
- 12 Red Apron Pantry
- 14 Artist for a Day
- 16 90th Anniversary Celebration: Save the Date
- 17 Letter from the Secretary
- 18 King Cake Classic
- 19 Letter from the Placement Chair
- 20 Pumpkin Patch at Provenance
- 22 Designer Bag Bingo
- 24 MAGIC
- 26 Business Directory
- 30 Memorable Moments
- 31 Celebrations
- 32 Cookbooks



JUNIOR LEAGUE OF  
**SHREVEPORT-BOSSIER**

Cover photography by  
Emily Hamann, Social Butterfly Advertising & Design, LLC

## 2022-2023

### PARISHSCOPE Staff

#### Editor

Emily Hamann

#### Assistant Editor/ Business Manager

Hannah Mayer

## 2022-2023

### Board of Directors

#### President

Margaret McDonald

#### President Elect

Ginny Lamb

## 2022-2023

### Executive Vice President

Alex Person

#### Secretary

Chelsea Adcock

#### Treasurer

Stephanie Foster

#### Nominating Chairman

Shelvia R. Grant

#### PR&D Chairman

Kendra Joseph

#### Actives at Large

Stacey Melerine  
Anna Brown Priestley

#### Sustainer Advisor

Toni Thompson

## 2022-2023

### Management Team

#### Executive Vice President

Alex Person

#### Communications VP

Tara Jones

#### Community VP

Devon Leon

#### Fund Development VP

Jane Sugar

#### Membership VP

Catherine Guidry

#### Assistant Treasurer

Julia Todd

Designed by: grace! graphic design + marketing

Printed by: Paragon Press, 901 Tatum St, Shreveport, LA 71107

The Junior League of Shreveport-Bossier, Inc. is an organization of women committed to promoting voluntarism, developing the potential of women, and improving communities through the effective action and leadership of trained volunteers. Its purpose is exclusively educational and charitable.

The Junior League welcomes all women who value our Mission. We are committed to inclusive environments of diverse individuals, organizations, and communities.

Parishscope Quarterly Magazine  
Volume 57, Issue 1

©2023

Junior League of Shreveport-Bossier  
Reproduction in whole or in part by any means is prohibited without written permission by JLSB.

The Junior League  
of Shreveport-Bossier  
2601 Line Ave.  
Shreveport, LA 71104  
Office 318.221.6144  
Fax 318.221.4601  
jlsb.org



# LETTER FROM THE

# President



Margaret McDonald

Happy New Year! I love the new year because it is a time of reflection and a fresh start full of opportunity and potential. This issue of the *Parishscope* examines both the past and future of the Junior League of Shreveport-Bossier. I am thankful to have this space to share my personal highlights from the fall and my eagerness for the League's new year.

When I think about the past few months, what stands out are our two busiest weeks of the League year. On September 24, we held Super Safety Saturday and we stocked our patch with over 3,000 pumpkins. Our Pumpkin Patch at Provenance opened September 26. The Red River Revel opened October 1, and for nine days we staffed the Pepsi booth and the Artist for a Day tent. I enjoyed attending and participating in all these events alongside dedicated and enthusiastic JLSB volunteers!

The JLSB is a sponsor of the Red River Revel, and as JLSB President, I sit on the Revel's Board. I was thrilled to experience the excitement surrounding the Revel this year. Because of the record attendance at the Revel, we had fantastic sales in the Pepsi booths and raised over \$11,000! We also had 2,100 children visit the Artist for a Day tent. The Saturday I joined in the fun with Artist for a Day, we made maracas and decorated masks with 500 children.

The Pumpkin Patch at Provenance provided a month full of highlights. In the JLSB we often talk about developing new skills and stepping out of our comfort zones. I did this by appearing on the local morning news to promote the Pumpkin Patch. Although I was a bit nervous to be on television, sharing that experience with President Elect Ginny Lamb and Pumpkin Patch Chair Arielle Kendall made it lots of fun! My other favorite memory from the Patch was working a shift with Nominating Chair Shelvia Grant and Provisional Advisor Lindsey Brown. We had a great time chatting and selling pumpkins . . . until the sprinklers came on and drenched our sales tent!

In November, Active and Provisional members met in small groups to discuss our League experiences. League leadership will utilize the feedback from members as it crafts a new strategic plan. Thank you to the Sustainers who hosted these small group meetings—Katie Baker, Jodie McJunkins, Peggy Murphy, Melanie Peacock, Missie Poindexter, and Dixey Robertson.

A special highlight of the fall was joining Nominating Chair Shelvia Grant and President Elect Ginny Lamb to ask Executive Vice President Alex Person to serve as JLSB President in 2024-2025. Alex and I were in the same Provisional class, and it is a joy to volunteer alongside her. She is a fantastic motivator and speaker and has a heart for service.

One of my favorite parts of serving on the Board is planning for the League's future. In December, the Board voted to move \$250,000 of our savings into the Junior League of Shreveport-Bossier Endowment Fund at the Community Foundation of North Louisiana. I am incredibly proud of President Elect Ginny Lamb and her passion and leadership behind this impactful decision.

Looking forward to the final months of the League year, I am already anticipating future highlights like Designer Bag Bingo and our 90th Anniversary Party!

Warmly,

*Margaret McDonald*

2022-2023 President



Ginny & I were on the local Morning News promoting the Pumpkin Patch!





*Clockwise from top left:*

At the Revel Pepsi Booth with Grace;  
Surprising Alex with Shelvia and Ginny!;  
With Lindsey and Shelvia at the Patch

## *Important Dates* TO REMEMBER

**FEBRUARY GMM**  
FEBRUARY 14  
*Community Foundation*

**MARCH GMM**  
MARCH 14  
*CHRISTUS*

**DESIGNER BAG BINGO**  
MARCH 30  
*Sam's Town*

**90TH ANNIVERSARY  
CELEBRATION**  
APRIL 29  
*Shreveport Club*

**MAY GMM/ANNUAL  
CELEBRATION  
MEETING**  
MAY 9  
*Petroleum Club*

For more information about upcoming events, log in to [jlsb.org](http://jlsb.org) and access the Member Calendar.



**A special thank you to those who have already joined the 1933 Society this year!**

## LEAGUE LEADERS

Dr. Betsy and Broox Boze  
Kim Foret

Dr. Peggy Murphy  
Carolyn Murphy Thompson  
Leslie Scott

Jane Sugar/LSU School of Medicine  
Edie B. Williams

.....

## LEAGUE ADVOCATES

Nancy Broyles  
Melinda Hernandez  
Lesa McDonald

Stacey Melerine  
Patricia Miramon  
Melanie Peacock

Tracy L. Prestwood  
Julia Todd  
Allison Washington

.....

## LEAGUE PARTNERS

Susan Adams  
Katie Adger  
Debbie Angelo  
Tookie Barr  
Julia Blewer  
Nita Braddock  
Susan Cox  
Lee O'Brien Davis  
Roxann K. Davis  
Helen E. DeBeaux  
Lennis S. Elston

Melissa Flores  
Corinne Garrett  
Elba Hamilton  
Lisa Hargrove  
Michele Horton/Anti-Pest  
Cindy Jones  
Tara Jones  
Mary Jo Kayser  
Hollisann Kent  
Maggie Malone  
Margaret McDonald  
Jodie McJunkins

Patricia O'Brien  
Margaret Oden  
Sybil T. Patten  
Betsy Chandler Peatross  
Angie Phares  
Michele Q=Petersen  
Leslie Smith  
Jane Snyder  
Stacey Timms  
Charlotte Walter  
Michele Wiener





We're here for you.  
Wherever "here"  
happens to be.

## Introducing On Demand Care from CHRISTUS Health.

Our new On Demand Care gives you the ability to see an urgent care clinician in 20 minutes or less without the need to schedule a visit.

Go to [CHRISTUShealth.org](https://CHRISTUShealth.org), select "Virtual Care On Demand," and you will see the next available online specialist. All urgent care clinicians are CHRISTUS Health board-certified providers who see you through live video from your smartphone, tablet, or computer.

### What can my On Demand clinician treat?

- Allergies
- Bladder infections
- Bronchitis
- Coughing
- Diarrhea
- Fever
- Migraines or headaches
- Pink eye
- Rash
- Seasonal flu
- Sore throat
- Stomachache
- Urinary tract infections



[CHRISTUShealth.org](https://CHRISTUShealth.org)



## LETTER FROM THE

# Sustainer Advisor



Toni Thompson

## RESOLVE TO MAKE A DIFFERENCE

The New Year is upon us and that always brings about talk of change. One thing that remains constant, however, is those wonderful ladies among us who continue year in and year out to promote voluntarism, develop the potential of women, and improve our communities. We all know those special people who, through all the challenges of this last year, have consistently given of themselves and exemplify the best in our community. Please take a few moments and honor that person by nominating them for our highest award, Sustainer of the Year.

Also, plan to be a part of celebrating the recipient when she is announced and recognized at the May Dinner Meeting. You can email me at [tonithompson67@gmail.com](mailto:tonithompson67@gmail.com) or call me at (318) 218-4589 for more information on nominating someone for this very special recognition.

As Sustainers it is time for us to come together to hear about the current status of the JLSB Active chapter and address some important topics to best support the JLSB, its missions, and our Sustaining members going forward. To accomplish that, we need you. We need your unique experiences,

insight, and abilities to be a voice in this discussion.

On Thursday, February 23 at noon, we will be coming together at the League office for a Sustainer Panel discussion to have an open and honest conversation. Included in our discussion will be whether to return future Sustainer of the Year Award celebrations to a standalone event or keep them as part of the May Dinner Meeting, which was necessitated during COVID. Other important topics will include hearing from current JLSB leadership, the trends of Active chapter membership, current and historical fundraising results and opportunities, community events, and projects. All Sustainers are welcome and encouraged to attend. Please text or call me at (318) 218-4589 or Amy at the League office at 221-6144 to RSVP. Lunch will be provided. My main goal from this meeting is to get a group of Sustainers spanning different decades of JLSB service to be available to advise the Sustainer Advisor and Sustainer at Large so they can best serve the Board.

Resolve this year to make a difference in our community as a JLSB Sustainer.

## SUSTAINER OF THE YEAR

# Award Guidelines

### AWARD HISTORY

More than 100 years ago, Mary Harriman, founder of the Junior League Movement and public service pioneer, recognized the need for a new model of leadership—one that emphasized collaboration over competition. She transformed the way women of her generation and class viewed their obligation to society, and she played a pivotal role as a social connector.

The Junior League of Shreveport-Bossier's Sustainer of the Year Award celebrates a woman of outstanding

leadership in the Junior League who has used her talents and resources to improve the social and economic conditions of others and who exemplifies The Junior League Mission and Vision. She has made a positive impact in her League and her community, and her volunteer work continues in the tradition of our founder, Mary Harriman. This Award provides a contemporary link to Mary Harriman's sense of social responsibility as well as her ability to encourage others to share their talents through effective volunteer service.

#### When nominating a fellow Sustainer for this award, please consider the following:

1. What have been the most significant and lasting contributions the nominee has given to the League?
2. What community issues has she addressed? How has she made a difference in the community?
3. How has she influenced others to be a force for change and impact?
4. How has she demonstrated herself to be a role model, mentor, catalyst, and risk-taker?



# VOLUNTEER OF THE YEAR

# Nominations



Catherine Guidry

The Volunteer of the Year Committee asks that you nominate a fellow Junior League of Shreveport-Bossier member for the Volunteer of the Year award. The JLSB will recognize this year's award recipient in May at the League's end of the year celebration. When considering who to nominate, please keep in mind that the JLSB would like to honor a volunteer who:

- ☐ Is an Active member in good standing.
- ☐ Possesses outstanding performance visibility within the League (of secondary and less importance is her involvement in and commitment to organizations outside of League).
- ☐ Demonstrates the principles espoused in JLSB's mission and vision statement and whose spirit and nature reflect a positive image of JLSB.
- ☐ Exceeds the expectations of general membership with unsurpassed interest in voluntarism and a commitment to community service.
- ☐ Has received at least one Leading Lady recognition during the 2022-2023 League year.

Please submit nominations to Membership Vice President Catherine Guidry at [cachatelain@gmail.com](mailto:cachatelain@gmail.com) or by filling out the nominations form on Digital Cheetah under the Resources, Forms, and Communications menu. Nominations are due by April 15, 2023.

## NOMINATIONS

Submit nominations to Member Vice President **Catherine Guidry** at [cachatelain@gmail.com](mailto:cachatelain@gmail.com) or by filling out the nomination form on Digital Cheetah.

***Nominations are due April 15, 2023***



JUNIOR LEAGUE OF  
**SHREVEPORT-BOSSIER**



Jessica Latin (with Sarah Giglio),  
a recipient of last year's  
Volunteer of the Year award



JLSB members attending last year's May Dinner Meeting



Elizabeth Martin

2023 is here! It is hard to believe that we are halfway through the Junior League year. The Provisional class has been busy learning all about the Junior League of Shreveport-Bossier during this year's Provisional meetings. So far, they have learned about the Community and Membership Councils, participated in the November small group meetings, and celebrated at the Provisional holiday party.

The Provisional holiday party was held on December 20, 2022 at the Junior League office. Our group participated in a class led by NASH Charcuterie. We had a fun evening learning how to assemble our charcuterie boxes with meats, fruits, vegetables, and dips. Lots of laughs and great conversations were had.

Provisionals have also participated in January annual interviews. These interviews were conducted by the Provisional Advisors to gain insight into each Provisional's Junior League experience. Any feedback will be used by the Provisional team for the following year.

During the February meeting, Provisionals will learn about the Fund Development and Communications Councils. During the March meeting, we will have a "placement party." This meeting will allow Provisionals to ask any additional questions about placements, as well as get assistance from their advisors when submitting their community placement preference in Digital Cheetah. We will have our last Provisional meeting in April. We will celebrate the end of the year with the Board of Directors. The Provisional class will be honored at the General Membership Meeting in May.

This year has allowed our Provisional class to experience all aspects of the Junior League. They have observed community placements, participated in fund development projects, and learned more about the Junior League of Shreveport-Bossier through General Membership Meetings and Provisional meetings. We have a wonderful group of women, and I am very excited to see the Junior League of Shreveport-Bossier grow because of them.





# NEWS FROM THE NOMINATING *Committee*



Shelvia Grant

The 2022-2023 Nominating Committee has been hard at work since last summer, slating Erin Walker as Assistant Community Vice President and Maria Woodley as a Nominating Advisor. Both ladies graciously accepted and have been serving in their new roles.

In addition to slating the League's future leaders, nominating committee members also serve as advisors to Active League members throughout the year. In lieu of a January General Membership Meeting, Nominating Advisors con-

duct individual annual interviews with their assigned League members. These interviews give members an opportunity to receive guidance on their League career and give valuable feedback on their membership experience.

Nominations and applications for Executive Vice President-Elect and President-Elect-Elect were opened in September. After carefully reviewing all the submissions, we are pleased to announce the slate that was confirmed by membership in November small group meetings.



## DEVON LEON

Devon Leon has been slated for Executive Vice President-Elect for the 2022-2023 League year and will assume the role of EVP in 2023-2024. Devon is a fifth-year member, who joined and spent her earlier years in the Junior League of Lafayette. She joined the League to meet new people and give back to her new home; and stayed Active when relocating to Bossier City because she knew firsthand of the League's impact on the community. Devon stated, "I also love that the League is 'my thing' outside of my roles as a mom, wife, physical therapist, and any other roles I have to be."

Since transferring to the JLSB, Devon has stepped into leadership and currently serves as the Community Vice President. As Executive Vice President, she is most looking forward to working alongside like-minded women to help this organization remain a pillar in the community and continuing to learn more about our League and how we can expand our outreach efforts to increase impact in the future.

Devon is employed as a Physical Therapist for Willis-Knighton Rehabilitation Institute. She and her husband, Spencer, live in Bossier City with their two daughters, Emily, 4, and Anna, 2.



## ALEX PERSON

Alex Person will assume the role of President-Elect-Elect for the remainder of the 2022-2023 year. Alex will become President-Elect in the 2023-2024 year and President in 2024-2025. Throughout her eleven-year League career, she has served in several leadership roles, including JLSB Market Chair, Fund Development Assistant Vice President and Vice President, Member at Large, Sustainer Liaison, and Nominating Chair. Alex is currently the Executive Vice President, where she collectively oversees the Communication, Community, Fund Development, and Membership as a part of the Management Team.

She truly has a heart for the JLSB and credits the League for helping her become the woman she is today, by teaching her board governance, finance management, leadership skills, and how to effectively communicate with different personalities.

As President, Alex plans to expand and raise awareness around our community projects, increase membership engagement, and provide more support to our members who give their time to serve our community through the JLSB.

Outside of the League, Alex is the Director of Education/Forensic Interviewer at the Gingerbread House Children's Advocacy Center, where she has worked for ten years. She lives in her hometown of Haughton with her husband of ten years, John David, and their two children, Andrew, 6, and Anna Claire, 3.





Alyssa Moore

Throughout the years, JLSB has enriched the entire SBC area with a vast majority of programs, fundraisers, and various opportunities to directly support and impact our community. Our very own Red Apron Pantry is a community placement that continues to do just that. Well into its fifth year in force, Red Apron Pantry remains a consistent comfort for many clients who have been visiting our food pantry since its inception, while continuing to provide for new households every year.

Located inside our very own JLSB Office in Suite D, our Red Apron Pantry opens its doors every month to distribute food and other household items to those in need in our local community. Clients who meet the income requirements regulated by the Food Bank can fill out an application and enroll in our program immediately. Red Apron Pantry has continued its partnership with the Food Bank of Northwest Louisiana in Shreveport. We are so thankful for this continued partnership, as this allows us to submit monthly orders and keep our shelves stocked with a variety of essential items at all times. Katherine Stringer-Davis, our family liaison, has done a tremendous job of implementing her role and contacting our clients each month. Since the boxes are prepackaged, it is important to us that we are providing useful and desired items, checking for food allergies and other dietary restrictions, and making groceries selections every month that best align with the needs of our clients.

Housing our pantry inside Suite D continues to be a helpful asset for Red Apron Pantry. We are able to facilitate a true pantry model, keeping two rooms fully stocked and rotating out items in an organized and timely manner. Our deep freezer is also a huge resource when it comes to the grocery selection process. Thanks to the addition of the freezer, we can request specialty selections from the Food Bank when available, such as frozen chicken breasts, meal ready kits, desserts, and other novelty items. Something as simple as an added treat bag containing these surprise items keeps the pantry fun and exciting for our clients each month.

When I began working with Red Apron Pantry as a volunteer last year, the pantry had already shifted from a self-

serve model to curbside pickup. Prior to the pandemic, the clients would come in, grab a bag, and make their monthly selections based on items available. Once COVID-19 struck, Red Apron Pantry leaders developed a new distribution model that allowed volunteers to pack boxes and distribute to clients' vehicles as they drove up. When I stepped into the head volunteer role in June 2022, I felt it was best to keep this curbside model in force. While there are benefits to both, our clients really seem to enjoy the easy convenience of "drive up and go." This also allows us to connect and interact with each client individually before shutting the trunk and sending them on their way until next month. Overall, this is something that will continue to be monitored and reviewed on a yearly basis as we continue to get feedback from our clients.

From a volunteer standpoint, I personally believe Red Apron Pantry's predetermined shifts and set annual schedule allow great flexibility and long-term planning for our group members. Like most others, I work full time during the week, and it was imperative that I found a placement that would complement my work schedule. Red Apron Pantry has been a placement that has easily done just that. Red Apron Pantry meets, packs, and distributes to our clients on the third Thursday of every month. Our shifts rotate every hour on the hour from 2pm to 6pm, with our doors opening for distribution at 5pm. These dates and shifts are set at the beginning of the League year, and volunteers are able to sign up far in advance or month to month, whatever fits their schedule best. Shiftwork includes picking up food from the Food Bank, unloading into Suite D, rotating and restocking shelves, packing boxes, and distributing directly to clients once doors are open. Whatever your schedule or volunteer preference may be, there is a spot for you at Red Apron Pantry. This community placement is a fantastic way to fellowship with other League members while getting involved and directly serving our community. I highly encourage any League member who has not experienced Red Apron Pantry to come hang out with us one Thursday afternoon and see what we're all about!





*Our physicians are dedicated to*

Improving  
Quality  
of Life



*Garden  
Park*

NURSING & REHABILITATION CENTER, LLC

[GARDENPARKNURSINGANDREHAB.COM](http://GARDENPARKNURSINGANDREHAB.COM) | 318-688-0961



# ARTIST FOR A *Day*



Brittany House

Artist For A Day at the Red River Revel (AFAD) was a huge success in 2022! This is, no doubt, due to the credit of the AFAD Committee members and our glorious leader Emily Oliver. Without Emily's organization and the team spirit of the Committee, this concentrated placement would have been a foggy experience. These Committee members deserve some high praise and recognition for their dedication during the 300+ total service hours that were achieved. Katie, Emily, Kimberly, Angie, Sherricka, Sarah M., Sara W., and Destinee, you guys rocked it! In review, we found that our Provisionals and Board Members came through in the clutch when our Committee was spread thin. We couldn't have done it without you ladies, and are forever grateful for your time, dedication, and positive mental attitudes!

The 2022 AFAD Committee was so excited to be back in the true swing of things post-COVID, and served over 2,100 children just at the Red River Revel! We aimed to improve the esthetics of the booth, the variety of crafts available to children, and educational value of the crafts, and experience for the children. With the creativity of the AFAD Committee, we were able to offer Mosaic Turtles, Maracas, Dancing Ribbons, and Masks. Each of these crafts represent one discipline of the arts, which are

Visual Arts, Music, Dance, and Drama, respectively. By far, the favorite crafts were the Maracas and Mosaic Turtles, and depending on the AFAD Committee next year, they may emerge for a reprise. Our Committee also made an appearance at Super Safety Saturday, helping children create Rain Sticks.

I highly encourage each one of you to attend an AFAD shift in the upcoming season, even if you're not on the Committee or don't need the volunteer hours. It's truly a wonderful bonding experience between Junior League members, and the more volunteers we have, the better, more focused experiences are provided to the children. Stop by with your Red Apron, spend an hour or two with the kids and your fellow League Members, and finish off with a stroll around the Revel—what a perfect day!

In the future, we are considering expanding AFAD to include other events, such as a spring event. If you know of any areas that would be able to help us reach underserved children by exposing them to the arts, we would love to hear of them to push this program past nine days at the Red River Revel. Reach out to me at [bhouse11@gmail.com](mailto:bhouse11@gmail.com) if you have suggestions or have questions about joining the AFAD Committee for the 2023-2024 year.

LAISSEZ LES BON **smile** ROULER!

KREWE OF GRAF ORTHO

**Graf**  
ORTHODONTICS







90TH ANNIVERSARY

*Celebration*

Ginny Lamb



We are thrilled to announce the Junior League of Shreveport-Bossier 90th Anniversary Party that will take place on Saturday, April 29. Since 1933, the JLSB has been instrumental in creating sustainable community programs that cause lasting change in our community. Our research has benefitted the community in creating programs like the Mollie E. Webb Speech and Hearing Center and the Rutherford House. The JLSB also helped create incredible opportunities for the children of Shreveport-Bossier, like the Red River Revel and Sci-Port Discovery Center. These, as well as many other accomplishments are what make the Junior League vital to our community.

Following the difficult few years we have experienced in our world, we feel like it is time to honor the past, while celebrating the future of the League. We invite all Active, Provisional, and Sustaining members and guests to please join us to celebrate the hard work of the Junior League on **Saturday, April 29 at The Shreveport Club, 6pm-8pm**. There will be wonderful food, drink, and company to enjoy, as well as door prizes and exciting announcements! Tickets are available at minimal cost at [www.jlsb.org/specialevents](http://www.jlsb.org/specialevents). We hope you and your guests will join us so we can all celebrate together!

*Save the Date*

**90TH ANNIVERSARY PARTY**

**APRIL 29, 2023**

**AT THE SHREVEPORT CLUB  
401 TRAVIS STREET  
SHREVEPORT, LA 71101  
6:00 PM – 8:00 PM**

**Tickets available for purchase <https://www.jlsb.org/specialevents/>**

**For questions: please contact Ginny Lamb at [virginia.b.lamb@gmail.com](mailto:virginia.b.lamb@gmail.com)**



# LETTER FROM THE

# Secretary



Chelsea Adcock

Happy New Year! It's hard to believe 2023 is already upon us. Members are still working hard in the community and behind the scenes on behalf of the Junior League of Shreveport-Bossier.

However, it's not all work and no play. As your 2022-2023 League year secretary, I've had the pleasure of seeing many of your smiling faces during check-in at our General Membership Meetings (GMMs). This placement has also given me the opportunity to participate in the exciting GMM activities planned by the Member Engagement Committee, and the fun doesn't stop when the meetings end. The committee also helps coordinate affinity group activities. From a book club to a bunco crew to an active group, there are several opportunities each month for you to connect with fellow League members outside of your placement or the GMM.

Please visit the JLSB website for more information about the available affinity groups and to opt-in for one, some, or all of them! While you're at it, don't forget to like @JLSB.org on Facebook, request to join the JLSB Membership private Facebook group, and follow @JuniorLeagueSB on Instagram.

If you haven't already marked your calendar, the 2023 Designer Bag Bingo will be Thursday March 30 at its new location of Sam's Town Casino. This is an event you don't want to miss! I've attended DBB in the past, and I can assure you that you'll have a great time. It's an opportunity to not only support the League but to also meet your Fund Development Shift commitment.

Speaking of commitments, please remember all Active members are required to attend at least five GMMs in a League year. All Provisional members should attend at least five GMMs in addition to the required Provisional meetings and one Board of Directors meeting in a League year. Please do not stress or worry if you're feeling behind on this commitment. We still have a few more months ahead of us, which includes a double-credit GMM in March. As a re-

minder, GMMs are always held on the second Tuesday of the month. Keeping marking your calendar if you already have it pulled up!

Not quite sure where you stand on the above commitments? Log into Digital Cheetah to check your status across League obligations. Visit JLSB.org and select MEMBERS in the top-right corner of your screen for the Digital Cheetah login page. Credits are entered as quickly and as accurately as possible, but errors do occur. Please reach out if you feel your credits have been recorded incorrectly.

Now, back to the fun stuff. Our League year culminates with the May Dinner Meeting that will be on Tuesday, May 9. This is a time for us to come together as a League to celebrate the impact of our community projects, fundraising events, and members who have gone above and beyond in their service to the League. We'll recognize the outgoing and incoming Board of Directors and Management Team as well as two outstanding high school students. Each year, two seniors, one from Caddo Parish and one from Bossier Parish, are presented with scholarships in honor of their dedication and service to their school and to their community at large. This GMM is always a League highlight for me since we get to look back on what we've accomplished in a year while also looking ahead to future accomplishments along with the next generation as reflected in the scholarship recipients.

Thank you for your commitment to the League and all that you do to make the Shreveport-Bossier community a better place. What you do matters and makes a difference. You are appreciated and I hope to see you at an upcoming League event!

*Chelsea Adcock*

2022-2023 Secretary



JUNIOR LEAGUE OF  
**SHREVEPORT-BOSSIER**

# King Cake Classic

## 5K / 10K / FUN RUN



Jane Sugar

For the past several years, the JLSB has celebrated Mardi Gras with its annual King Cake Classic race, offering 5k, 10k, and 1-Mile Fun Run courses. Participants have had the option to either run, walk—or stay in bed! Even through the COVID-19 pandemic, the community was able to virtually participate in the KCC event. Due to unforeseen circumstances, the JLSB has made the hard decision to cancel the King Cake Classic this year. Additionally, the Board has voted to sunset the KCC event after this year.

So many partners of the JLSB made this event possible. Run Wild provided all race management services, including all registration, T-shirt orders, and race timing. Lowder Baking Company provided slices of their delicious king cake each year for all runners. This was perhaps the strongest motivation for participants to cross the finish line! Both Great Raft Brewing and Red River Brewpub provided ven-

ues that offered wonderful spaces for friends and family to gather before and after the race event.

The King Cake Classic committee and all members of the JLSB would like to thank its partners and all supporters who have sponsored this event over the years. With the funds raised through the King Cake Classic, the JLSB has been able to make a difference in our community through its projects, such as the Red Apron Pantry, the MAGIC mentorship program at the VOA's teen club, Artist for a Day, and the Active Kids health and wellness summer program.

Although the King Cake Classic event has now run its course, the JLSB is so proud of the work its members have done to fundraise through this event each year. Thank you for your time given and your support of the League! As always, *Laissez les bon temps rouler!*



JUNIOR LEAGUE OF SHREVEPORT-BOSSIER

# King Cake Classic

5K, 10K, FUN RUN



## LETTER FROM THE

# Placement Chair

Rebecca Radford



What an amazing League year it's been! I can't believe it's time to start considering and selecting placements for the 2023-2024 League year.

The placement process is always one of my favorite times of year. It gives members the chance to showcase their existing skills and talents or take the plunge into trying something completely new. Maybe you love social media and want to be on our Communication Council to better hone your skills? Maybe you want to try your hand at serving on a Fund Development committee to gain new experience in fundraising? This is a great time to plan your League career or learn skills you can bring to your professional and personal life.

When considering a placement for next year, check out the Placement Handbook that will soon be available on the Digital Cheetah homepage. This contains vital information for all available opportunities including descriptions, needed skills, skills that will be developed, time commitment, and more.

It's important to consider the amount of time you have and can dedicate to your placement for the year. We offer a huge range of time commitment and concentration options, so you can always find something that works for you. Some committees like Active Kids hit the ground running and start meeting during the summer then are done by the end of the summer. Whereas the Red Apron Pantry committee meets a few hours a month for the entire League year.

Please make sure to consider any life events or scheduling conflicts that may affect your ability to complete a placement such as pregnancy, school commitments, work schedules, etc. If you're due with a baby in October, serving on the Pumpkin Patch committee might not be a good fit. Letting us know you work late evenings, are busy in the fall with sports, have a conflict of interest asking for sponsors, etc., are all beneficial in helping the Placement Committee find the best placement to fit your life needs and desires for the upcoming year. Feel free to include this information in the Comments section of the Online Placement Process. Making sure we have the right people in the right positions helps make our committees and events successful!

The "Planning Your JLSB Career" document is a great resource on Digital Cheetah to help identify your current skills and what placements would be a good fit. It also shows

skills for future placements you want to work towards like Head Volunteer, Vice President, etc. This can be found under the Resources Tab under Placements Handbook and Information. Another great resource and my personal favorite is reaching out to the current committee or placement's Chairman, Head Volunteer, or Council Vice President. She can help give insight and answer specific questions about the role to help you decide if it's the right fit or what path you should take to be ready.

After January Advisor meetings and slating is completed, the online placement process begins. During this process, we ask members to rank their top four placement choices. Keep in mind you can only choose a maximum of two choices on the same committee. For example, you can select two roles on Pumpkin Patch, but your remaining choices must come from other placements, such as Active Kids Summer Camp and Designer Bag Bingo.

Please only rank placements you have a genuine interest in completing and each member must be prepared to be placed in any of her four selected choices. It is also important to note that a Head Volunteer should be available to attend the entire event, and first year Actives should not select an Assistant Head Volunteer position.

We make every effort to try to give everyone one of their top selections, but that's not always possible. In the event several members express interests in the same placements, the following criteria will be used when filling positions:

- ☐ **Attended AJLI training specifically related to requested placement**
- ☐ **Prior chairmanship**
- ☐ **Satisfactorily completing previous placements**
- ☐ **Years of service**
- ☐ **Meeting financial obligations on time**
- ☐ **Meeting attendance**

If you have any questions about the Online Placement Process or placement in general, please reach out to your Advisor. You are also welcome to contact me at [rebeccasluster@gmail.com](mailto:rebeccasluster@gmail.com) and include "Placement" in the subject line. Happy choosing and I can't wait to see the incredible things you'll accomplish in 2023-2024!

# PUMPKIN PATCH AT *Provenance*



Arielle Kendall

Autumn of 2022 brought us another successful year at the JLSB Pumpkin Patch at Provenance. I am so proud and thankful for our volunteers and our community for all of the hard work and time spent on this fundraiser. We sold pumpkins of all sizes, shapes, and colors. This year we had some unique specialty pumpkins and gourds that were new to our patch!

We had tons of fun with our friends from the Magnet Key Club, The Learning Center at Broadmoor, and the Shreveport Memorial Library. They helped us host activities for families and children each weekend throughout the month! With the help of the LSUS & BPCC Men's Baseball Teams, we unloaded more than 3,500 pumpkins! Unloading days can be a lot of work, so be sure to show your support for those two teams this baseball season!

Of course, our patch would not be possible without the contributions of several local businesses in our community. We would like to thank Sid Potts, Inc.; Little Realty, Inc.; CHRISTUS Health; Martin Specialty Coatings; Red River Bank; Bin There Dump That Residential Friendly Dumpsters; Bank of Montgomery; Gilmer & Giglio Criminal Defense & Personal Injury; Origin Bank; Roll'n Stone Rolled Ice Cream; Southern Loop Nutrition; Hargrove Roofing; Ferris Office Smart, LLC; Louisiana Reduction Company; and Provenance Realty Group.

On behalf of the Pumpkin Patch Committee, thanks for shopping, serving, and sharing our patch with your friends and family. Pumpkin season is always a time to reflect on the things we have to be thankful for, and we are so very thankful for you! See you next fall!



## THANK YOU TO OUR SPONSORS!



### GREAT PUMPKIN



### PUMPKIN PIE



### PUMPKIN SEEDS



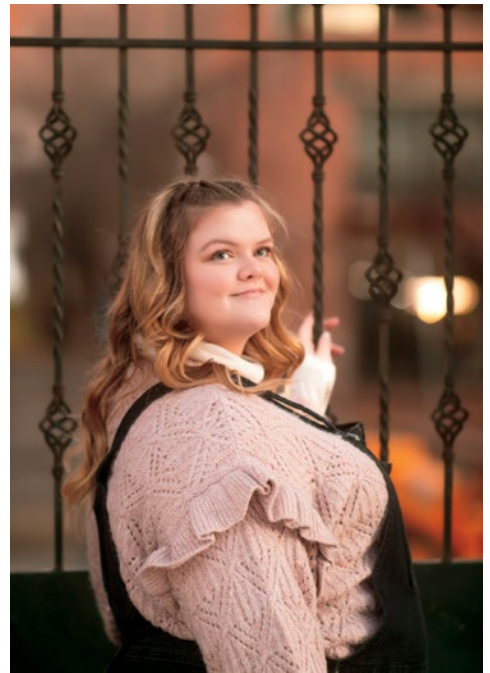
### PUMPKIN SPICE



### YEAR-LONG SPONSORS







# Social BUTTERFLY

PHOTOGRAPHY + WEB & GRAPHIC DESIGN + ADVERTISING



info@socialbutterfly.us



Social Butterfly Advertising & Design, LLC



@socialbutterflyofla



# DESIGNER BAG *Bingo*



Catherine Simpson

Springtime is on the horizon and that means it's almost time for another Designer Bag Bingo event! Last year's event was a success raising \$44,000 for community projects across the Shreveport-Bossier community. Thank you for your support! Whether you bought a ticket, sponsored the event, donated a raffle item, or volunteered that night, you played a major part in our success.

Making its debut in 2018, The Junior League of Shreveport-Bossier's Designer Bag Bingo pairs the fun of bingo with designer handbags as each game prize. This year, we have a new venue with many other exciting changes! Save the date for Thursday, March 30, 2023 at Sam's Town Hotel & Casino. The doors will open at 5:45pm and the fun will start at 7pm with 10 games of Bingo, plus lots of raffle prizes from local businesses. Upon arrival, raffle tickets and additional bingo cards & daubers will be for sale. Dinner will be served approximately 6:30pm. Be sure to get there early for the best seat!

Our event will feature a grand prize Luxury Designer handbag and nine other designer handbags. In addition to the purses, Designer Bag Bingo will also feature a \$25 raf-

fle ticket for a jewelry donated by Sid Potts. The \$10 "Treat Yourself" raffle ticket will include spa treatments, local art, restaurant gift cards, and more. It's sure to be a great night out with your friends!

We are so appreciative of organizations and individuals who have already committed to a sponsorship. Our Presenting Sponsor is **Community Bank of Louisiana**. Others sponsors as of press date include Gold Level, **Miramonte Law, Inc.**, and Silver Level, Sustainer **Lee Davis**. We, of course, also appreciate our year-long Junior League partnerships with **Sid Potts, Inc.** and **CHRISTUS Health**. Our committee is still working hard to make this the best year yet! Please contact a member if you would be interested in partnering with us.

Stay tuned to our Junior League of Shreveport-Bossier Facebook page as we reveal more information on ticket purchases, announce handbag prizes, and more!

Best,  
*Catherine Simpson*  
2022-2023 Chair  
cbdsimpson@gmail.com





# DESIGNER BAG BINGO SPONSORSHIP LEVELS

## PRESENTING SPONSOR – \$5,000 (ONLY ONE AVAILABLE)

**SOLD OUT**



**CommunityBank**  
OF LOUISIANA™



- Company LOGO on
  - > ALL event advertising
  - > Event program and signage at the venue
  - > Recognition in all email blasts to the JLSB membership about the event
  - > Social media tags on the JLSB Facebook and Instagram accounts
- 2 reserved tables for 10 attendees each (total of 20 attendees)
- 40 BINGO game cards per person (4 cards per game)
- “Skip the bar line” pass for each attendee at table

## PLATINUM – \$2,500

- Company LOGO on:
  - > ALL event advertising
  - > Event program and signage at the venue
  - > Recognition in all email blasts to the JLSB membership about the event
  - > Social media tags on the JLSB Facebook and Instagram accounts
- Reserved table for 10 attendees
- 30 BINGO game cards per person (3 cards per game)
- “Skip the bar line pass” for each attendee at table

## GOLD – \$1,500

- Company NAME on:
  - > ALL event advertising,
  - > Event program and signage at the venue
  - > Recognition in all email blasts to the JLSB membership about the event
  - > Social media tags on the JLSB Facebook and Instagram accounts
- Reserved table for 10 attendees
- 20 BINGO game cards per person (2 cards per game)

## SILVER – \$1,000

- Name recognition in the program and announced throughout the event.
- Reserved table for 10 attendees
- 20 BINGO game cards per person (2 cards per game)

## BRONZE – \$500

- Name recognition in the program
- 2 general admission tickets to the event
- 10 BINGO cards per person (1 per game)

## LAGNIAPPE – \$90

*“A little something extra” in honor of the Junior League of Shreveport-Bossier’s 90th year of service. This level can be in addition to another level or independent.*

- Recognition in the event program

## HANDBAG SPONSORSHIP

*Donate a new, with-tags handbag of \$295 or more in value as a bingo game prize. This can be an in-kind donation from a place of business or purchased by an individual/group of individuals. Please contact Catherine Simpson, chair, for more details and available options.*

- Name recognition in program and announced throughout designated game
- Social media tags and thank you post after the event

# MAGIC: MENTORING

# *Ambitious Girls*

Tamika Hayden



## TO INSPIRE CHANGE

Mentoring Ambitious Girls to Inspire Change (MAGIC) is a mentorship program that works with Volunteers of America Teen Club girls at Highland Center to set positive examples of character and behavior in the “real world.” Teen Club provides a safe place for high school students to meet positive and encouraging people who will help them prepare for their future. Mentoring programs make a difference in the lives of young people. Quality mentoring relationships impact youth in so many ways, from positive outcomes in academics and professional pursuits to even more personal milestones like boosting confidence and self-esteem. The MAGIC program focuses on uplifting and empowering young ladies.

MAGIC provides a great opportunity for League members to be a great inspiration and positive influence in the lives of young girls preparing them to become young women. We began our year with icebreakers and getting to know one another. I asked the young girls what topics they would like to discuss and what they are expecting to learn from this experience. I believed it was important to get feedback from those who would be benefiting from our services. I also wanted to provide reassurance to them that this is a safe space and that our hopes are to leave them with valuable information and a life-changing experience. MAGIC is a wonderful placement for those who want to make an impact on young girls’ lives. In this placement you must be dedicated, persistent and organized. Currently I serve as the head volunteer for the program. This is my first Active year within the League. When it came down to me choosing a placement, I knew that MAGIC was where I wanted to be. Anytime I am granted the opportunity to mentor youth, I am always up for the challenge because it provides me with a rewarding feeling that I am making a huge impact and helping them to make a difference. I highly anticipate each session and the girls are always curious about what is the next topic that we will be dis-

cussing. The other League superstar volunteers consist of Kristin Johnson, Brittainy Pope, Angie McCain, and Amanda Cacapava—they all have a passion for inspiring and helping the young ladies through training and development. One thing I love about the MAGIC volunteers this year is that we all come from different unique and diverse career backgrounds, providing us with the opportunity to have a variety of inputs and provide different perspectives that the MAGIC mentees can benefit from.

Each month, during the months August to May following the Caddo Parish School calendar we host two sessions a month where the JLSB volunteers coordinate programs or-

ganized around topics such as self-esteem, building confidence, peer pressure, bullying, mental health, hygiene, teen dating, social media etiquette, money management and financial budgeting, creativity, healthy friendships, etiquette training, literacy and careers, volunteerism, healthy lifestyles, and making responsible decisions. The interactive programs help girls navigate society, encourage study, and show teens more of the world around them. MAGIC programming is fun for all and leaves participants with positive examples they can adopt in their own lives. We provide them with snacks

and drinks at each session.

I am so looking forward to the great success stories to come from this beautiful group of young ladies. We are about halfway through the placement calendar year, and I must say I have really enjoyed it. Upcoming we have Money Management and Financial Budgeting topics, college preparation, celebrating International Women’s Friendship month in March with girl empowerment, and so many other exciting opportunities. We welcome all League members to come out and join us on the second or fourth Monday of any month to continue to help us create MAGIC! This is a life-changing experience for not only the young ladies but for anyone who is involved. I thank everyone in advance for a great year.









# BUSINESS *Directory*



## **LA'ERICA BROWN, Let's Manifest Coaching**

[www.letsmanifestcoaching.com](http://www.letsmanifestcoaching.com)  
[letsmanifestcoachingllc@gmail.com](mailto:letsmanifestcoachingllc@gmail.com)

*Life can bring about so many changes and challenges that affects how we live from day to day. Sometimes we can go from being bright and ready to face the days ahead to feeling stuck and stagnant. If this is you, it's time to start working with us. We offer life, career, and spiritual growth coaching, with flexible schedules and virtual and in-person sessions. Are you ready? We are! Make an appointment TODAY!*



## **JESSICA LATIN, LPC-S, JL Counseling**

1545 Line Ave. Ste. 330E, Shreveport, LA 71101  
[www.jlcounselingllc.com](http://www.jlcounselingllc.com)  
 318-759-7865 | [wellness@jlcounselingllc.com](mailto:wellness@jlcounselingllc.com)

*Individual, couples, and family general mental health counseling services. Specializing in perinatal/maternal mental health. Teletherapy and in-person appointments available.*



## **ANGELA MYLES, Coldwell Banker Goslee**

318-861-2461 | [angelamyles.cbgoslee.com](http://angelamyles.cbgoslee.com)

*Angela Myles is a realtor with Coldwell Banker Goslee. Angela will guarantee and deliver results. You can rely on her to handle all of your home's needs.*



## **NICOLE ODOM, WEB DuBois Child Enrichment Center**

[www.webdcec.org](http://www.webdcec.org)  
[info@webdcec.org](mailto:info@webdcec.org)

*WEB Dubois Child Enrichment Center is a nonprofit organization that offers quality education to young girls in Shreveport, Louisiana. Through our program they get to participate in hands-on learning that will give them the skills and wisdom to grow into a confident and intelligent woman. Our out-of-school program focuses on science, technology, engineering, math education (STEM) education.*



## **KATHERINE STRINGER-DAVIS, Strings & Things**

IG: [LAStringsAndThings](https://www.instagram.com/LAStringsAndThings)

*Strings & Things is an online based shop with unique items. Our premier item is a burlap tote bag that can travel with you from work to the beach! Stay tuned for so much more!*

**In honor of Black History month, Black-Owned Businesses that are owned by JLSB members are highlighted on the first page of the Business Directory. We encourage our members to support them—not just during February, but all year long!**





**HANNAH ALEXANDER, Mac It Count with Hannah**

IG: [macitcountwithhannah](#)  
[macitcountwithhannah@gmail.com](#)

Hannah offers 1:1 accountability coaching with a focus on tracking macros. Taking a sustainable approach to health, macro tracking offers the ability to eat all food groups and maintain a well-balanced diet. Nutrition shouldn't be about deprivation—life's too short!



**KATHERINE "KATIE" SMITH BAKER, Bradley Murchison Kelly & Shea LLC**

401 Edwards St. Ste. 1000, Shreveport, LA 71101  
[www.bradleyfirm.com](#)  
 318-227-1131 | [kbaker@bradleyfirm.com](#)

Katie represents major and independent energy companies in litigation, title examination, division order work, and she routinely advises clients in all aspects of oil and gas exploration and production operations, including matters related to lease disputes, mineral owner demands, operating agreement disputes, title issues, and Louisiana risk-free issues. She also has extensive experience in handling complex commercial litigation matters.



**MARJORIE BRILEY, Ascend Education**  
[www.ascendmath.com](#) | 318-865-8232

Ascend Education develops and distributes Ascend Math. Ascend Math is a K to 12 personalized online math instruction that provides students with a unique study path through individualized math learning gaps at each grade level. Students utilizing Ascend Math have outperformed their peers in high stakes tests. Ascend Math® is currently used by hundreds of schools and districts serving students throughout the U.S. and Canada..



**KELLY CLAYTON, LUTCF, Farm Bureau Insurance**

4239 Hwy 171, Gloster, LA 71030  
 Office: 318.933.3500 | Cell: 318.288.7099  
[kclayton@sfbic.com](#)

Farm Bureau celebrated our 75th year in business in 2021. As your agent, I will help you plan for the unexpected and properly protect your assets with life insurance, health insurance, home insurance and auto insurance.



**JEAN CUSH, Cush's Grocery & Market**

9635 Ellerbe Rd., Shreveport, LA 71106  
[www.cushsgrocery.com](#)  
 318-795-9006

Cush's is a specialty grocery store with a café. Visit our Facebook page daily to view what is available! Groceries, casseroles, deli foods, cheeses, restaurant take-out food, steaks, seafood, liquor, wine, beer, paper goods, cleaning products, gifts, etc.—we have everything you need six days a week. Thank you for supporting a Junior League member's small, locally-owned business!



**ODESSA EASON, Ally Real Estate**

318-231-2000 | [Odessa.Eason@AllyRealEstate.com](#)  
 Let me help you buy your next home. Call me today to book an appointment.



**LEAH FELDT, Geaux Swim**

[www.geauxswim.com](#)  
 (318) 698-0085

Geaux Swim was started by two local families (one of which includes Leah Feldt, Junior League Sustainer) looking to bring a safe, fun, community-based swim program to Shreveport-Bossier. Our guiding principle is to promote safety, education, and conservation in a fun environment that fosters an experience that will last long after the swim lesson is over. We offer year-round swim lessons in our indoor pool, as well as birthday parties!



**Scuba Ventures**

[www.scubaventures.com](#)  
 318-222-2483

Scuba Ventures is co-owned by Leah Feldt and her husband, Jason. From diving lessons with certified trainers to gearing up in the proper dive gear, Scuba Ventures has just what you need to begin your diving adventure. Explore the underwater world with us! Whether you dream of seeing all of the colorful fish of the sea or simply want to feel the rush of the open water, we can turn your dream into a reality. We offer a full spectrum of underwater classes, from scuba, snorkeling, open water diving, boat diving, and more. Whether you're a beginner and looking to purchase or you're a seasoned diver and need to update your equipment, our retail store has all the gear you need. You can also rent scuba equipment and snorkeling packages designed to fit your specific needs. Join our team as we embark on diving vacations to explore the underwater world this season. Be the first to call and sign-up today!



**SARAH GIGLIO, Gilmer & Giglio**

3541 Youree Dr., Shreveport, LA 71105  
[www.gilmergiglio.com](#)  
 318-459-9111 | [sarah@gilmergiglio.com](#)

At Gilmer & Giglio, LLC, we pride ourselves on helping good people on their worst days. Whether you are accused of breaking the law or have been injured in an accident, we are here to help you.



**ELOISE AND DR. J. SANDERS GRAF, Graf Orthodontics**

Offices in Shreveport, Bossier, Minden, and Natchitoches, LA  
[www.grafortho.com](#)  
 318-935-0385

We recognize the importance of a great smile in improving self-esteem and quality of life for patients of all ages. Service is at the forefront of everything we do, and we pride ourselves on the relationships we create and maintain with our patients and their families.



**EMILY HAMANN,**  
**Social Butterfly Digital Advertising**  
 Serving Shreveport-Bossier City & NWLA  
 FB: Social Butterfly Advertising & Design, LLC  
 IG: socialbutterflyofla  
 318-218-4910 | info@socialbutterfly.us

*Social Butterfly Digital Advertising offers freelance and contract digital advertising, social media management, graphic design, web design, and photography services. With our founder's 10+ years of experience, Social Butterfly Digital Advertising specializes in giving local businesses the flair of national design work!*



**JENNIFER GOSS HAMER,**  
**Allied Family Chiropractic**  
 1658 Benton Rd. Ste. 100, Bossier City, LA 71111  
 www.alliedfamilychiropractic.com  
 IG: alliedfamilychiro  
 318-491-4659

*Allied is a family business run by myself and my husband. We are a family wellness clinic with patients ranging from newborns to 96 years old. Our focus is not only healing injuries, but also empowering wellness and physical fitness.*



**MICHELLE AND JARROD HORTON,**  
**Anti-Pest**  
 761 Professional Dr. South, Shreveport, LA 71105  
 www.anti-pest.com  
 318-221-6181 | pestolutions@anti-pest.com

*For over 70 years, Anti-Pest has been locally owned and operated, providing full-service pest control, termite control, and wildlife control to the Shreveport, Bossier City, and surrounding areas.*



**Porter's Carpet Cleaner**  
 707 Professional Dr. South, Shreveport, LA 71105  
 www.porterscc.com  
 318-798-8080

*Since 1974, Porter's Carpet Cleaners has been providing the best in cleaning for your home and business. A local, family-owned business, Porter's Carpet Cleaners will give personal care for your fine Oriental rugs, area rugs, carpet and upholstered furniture.*



**ARIELLE KENDALL,**  
**Realtor with Little Realty, Inc.**  
 417 Milam St., Shreveport, LA 71101  
 arielleismyagent.com | Cell: 318-834-6201  
 arielleismyagent@gmail.com



**SARAH LOWDER,**  
**Lowder Baking Company, LLC**  
 4019 Fern Ave. Ste. 500, Shreveport, LA 71105  
 www.lowderbakingcompany.com  
 318-562-1150 | info@lowderbaking.com

*Every product from our kitchen is made from scratch, every single day. We believe in using the highest quality ingredients possible—we only use unbleached, unbromated flour—no preservatives, no shortcuts. We are meticulous about consistency and freshness.*



**GINGER LUKACS, LEIGH BOWMAN,**  
**Pure Barre**  
 5821 Line Ave., Shreveport, LA 71106  
 www.purebarre.com/la-shreveport  
 318-588-6903 | shreveport@purebarre.com

*Pure Barre is a boutique barre fitness studio. Taught by our highly-trained teachers, Pure Barre features three group class formats that deliver an effective total body workout focused on low-impact, high-intensity movements that lift and tone muscles and improve strength, agility, and flexibility for everybody. We also sell gorgeous performance wear and athleisure for barre, yoga, Pilates, or just running the roads!*



**JULIA MIRAMON TODD, PATRICIA MIRAMON,**  
**Mirammon Law, Inc.**  
 3324 Line Ave., Shreveport, LA 71104  
 www.mirammonlaw.com  
 FB: miramonlaw | IG: Miramonlaw  
 318-869-0055 | jtodd@miramonlaw.com

*We are attorneys whose practice is dedicated to estate planning and elder law issues. Our family is here to help your family plan for the future or, if need be, settle a loved one's estate. From powers of attorney to probates, trusts, wills, estate planning and competency matters, we help hundreds of families protect and provide for the future. We believe that everyone, regardless of age, needs an estate plan.*



**LINDSEY PENNINGTON, MD,**  
**Lindsey Pennington, MD Facial Plastics**  
 6030 Line Ave. #110, Shreveport, LA 71106  
 www.penningtonmdfacialplastics.com  
 318-216-5366 | info@penningtonfacialplastics.com

*Dr. Pennington is a double board certified facial plastic surgeon. She offers a unique female perspective on a number of medical and surgical procedures, including Botox and dermal fillers to more advanced surgical techniques in facial rejuvenation, such as deep plane facelifts and eyelid surgery, in addition to facial aesthetic surgery with rhinoplasty (nose jobs). She is joined by cosmetic dermatologist, Dr. Souyoul, and their office offers medical grade skincare, along with a range of advanced lasers, aesthetic services, and facials.*



**MORGAN LANG, DDS, Lang Orthodontics**  
 Offices in Shreveport, LA and Natchitoches, LA  
 www.geauxsmile.com  
 318-861-0700

*At Lang Orthodontics, we are family focused and love to see our patients Geaux Smile! Dr. Lang is an Active Junior League member and provides treatment for children, teens, and adults. We offer traditional braces, invisalign, and virtual appointments.*





**RACHAEL K. PETERS, PHD, SHRM-SCP,  
AND JARRETT PETERS,  
Peters' Dry Dock**

12585 Mansfield Rd., Keithville, LA 71047

[www.petersdrydock.com](http://www.petersdrydock.com)

318-507-8300 | [jarrett@petersdrydock.com](mailto:jarrett@petersdrydock.com)

*Peters' Dry Dock services Shreveport and the surrounding areas with boat maintenance and repair needs.*



**RP Consulting Services**

318-507-8200 | [rachaelpetersconsulting@gmail.com](mailto:rachaelpetersconsulting@gmail.com)

*RP Consulting Services advises individuals and companies on matters related to human resources and career development. Specific services include resume writing/guidance, cover letter/admissions letter guidance, personality assessments with interpretation (e.g., MBTI®), career interests assessments (e.g., Strong Interest Inventory®), and solution-focused HR auditing.*



**ELIZABETH PIPPIN, Glass Services**

Locations in Shreveport, Bossier City, and Mansfield, LA

[www.glassservices.org](http://www.glassservices.org)

318-524-9980

*Your choice for superior glass. The one stop shop for Auto, Residential, and Commercial Glass.*



**FRANNIE AND MICHAEL POWERS,  
Global Conveyance Solutions, LLC**

3825 Gilbert Dr. Ste. 128, Shreveport, LA 71104

FB: Global Conveyance, LLC (@GlobalConveyanceLLC)

[globalconveyance.com](http://globalconveyance.com) | 877.863.7477 ext. 101

[operations@globalconveyance.com](mailto:operations@globalconveyance.com)

*Global Conveyance Solutions, LLC is a full service transportation and logistics provider. We provide domestic and international shipping via land, air, and sea.*



**HEATHER PRICE, Porter's Cleaners**

Locations in Shreveport, Bossier City, and

Natchitoches, LA; Carthage, TX

[www.porters-cleaners.com](http://www.porters-cleaners.com)

318-742-1097 | [info@porters-cleaners.com](mailto:info@porters-cleaners.com)

*Porter's Fine Dry Cleaning's missions is to provide their customers with unparalleled quality and satisfaction as they pursue their commitment to restoring and delivering garments and household items to conditions beyond customer expectations.*



**LYNN S. ROOS,  
Realtor with Coldwell Banker Gosslee**

8805 Line Ave., Suite 100, Shreveport, LA 71106

FB: LynnRoos, Realtor Coldwell Banker Gosslee

Cell: 318-455-6004 | Office: 318-861-2461

[lynn.roos@coldwellbanker.com](mailto:lynn.roos@coldwellbanker.com)



**KIRSTEN SHREWSBERRY,  
Strawberry Designs**

[www.strawberrydesigns.co](http://www.strawberrydesigns.co)

210-240-5080 | [info@strawberrydesigns.co](mailto:info@strawberrydesigns.co)

*Strawberry Designs is your top choice for custom woodworking needs. From wedding gifts, to children's Montessori inspired toys, to custom home furnishings, Strawberry Designs does it all!*



**SAIGE SOLOMON, Closets In Order**

[www.closetsinorder.com](http://www.closetsinorder.com)

FB: Closets in Order | IG: ClosetsInOrder

318-797-1186 | [saige@closetsinorder.com](mailto:saige@closetsinorder.com)

*Saige Solomon co-owns local closet design and organization business Closets in Order. We specialize in custom organization solutions for the home and office and offer fully turn-key services from design to installation. We also offer professional organization services for clients.*



**JENNIFER AND RODNEY VARNADORE,  
BNB Systems**

9205 Youree Dr., Shreveport, LA 71115

[www.bnbsystems.net](http://www.bnbsystems.net)

318-795-2338 | [rodney.varnadore@bnbsystems.net](mailto:rodney.varnadore@bnbsystems.net)

*Services include printing, direct mail, promotional items, branded t-shirts and apparel, banners, office supplies.*



**ERIN WALKER,  
Erin Walker, DDS Family Dentistry**

2001 E 70th St., Shreveport, LA 71105

[www.erinwalkerdds.com](http://www.erinwalkerdds.com)

318-797-4321 | [ewalkerdds@gmail.com](mailto:ewalkerdds@gmail.com)

*We provide dental care for the entire family in a small, privately-run office. If you're looking for a new dentist, we're happy to welcome you!*



**VINTAGE  
HOMES**

**AWARD-WINNING MINDS  
WITH 235 YEARS' EXPERIENCE!**



**LUXURY CUSTOM HOMES - LARGE SCALE REMODELING**

**[buildwithvintage.com](http://buildwithvintage.com) | 318.683.0636**

View custom projects on our website & social media    houzz

# Memorable Moments



Kendra Scott Event



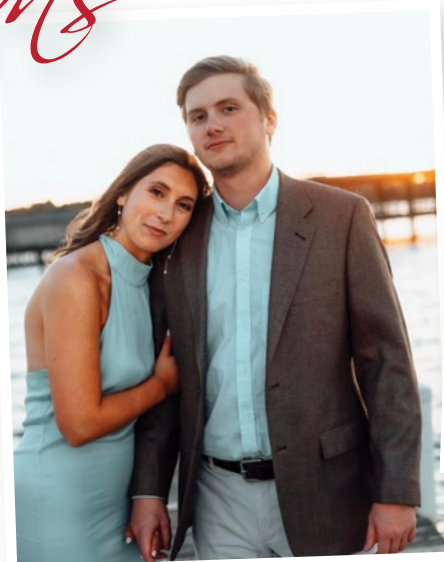
Behind the Scenes—  
Cover Shoot



# Celebrations



**Kayla Georgewill** (Active) had twins on November 23, 2022.



**Ashley Sandel** (Active) got engaged to Johnny Hardin. Their wedding is May 23, 2023.



**Samantha Snyder Martin** (Active) married Reid Martin on November 18, 2022.

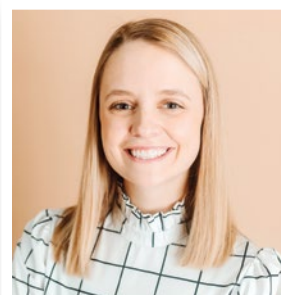
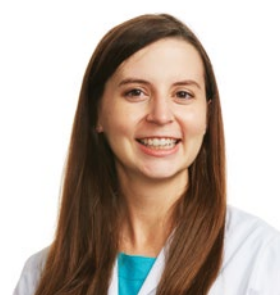
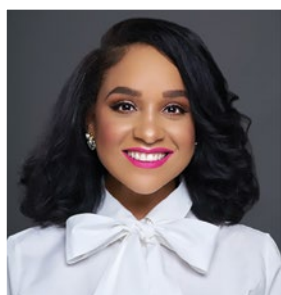


Highlighting the 2022 White Out Cancer "Champion of Hope" honorees, **Kimberly Brown** (Active) and **Dr. Jane Sugar** (Active), **Shelvia R. Grant** (Active), as the Event Chair, and **Ro Morvant** (Active) as the American Cancer Society, American Cancer Society Senior Development Manager.

**Angela Myles** (Active) started as Financial Empowerment Coordinator at the Highland Center and was appointed to YPI's executive committee.



white out  
**CANCER**  
GALA EXPERIENCE





## COOKBOOKS AND JUNIOR LEAGUE MEMBER SWEETHEARTS ARE ESPECIALLY BUSY THIS YEAR BRINGING SWEETNESS AND COLOR TO VALENTINE'S DAY!

What better way to someone's heart than through Junior League cookbooks, right?! We have plenty on hand at the JLSB office to create those special Valentine's baskets to go with the special confections you have made. Or you can give cookbook baskets and plan special cooking dates with that special someone or friends and family.

Ran out of time? Contact one of our volunteer bakers from the cover shoot! **Maria Woodley** specializes in custom sugar cookie creations and you can catch **Sarah Lowder** at Lowder Baking Company!



MARIA WOODLEY



SARAH LOWDER

### SUGAR COOKIES

*Revel, p. 345*

2 sticks butter	2 teaspoons baking soda
1 cup vegetable oil	2 teaspoons cream of tartar
2 cups sugar	2 teaspoons vanilla
½ teaspoon salt	1 teaspoon lemon extract
2 eggs	4 ½ cups flour

In mixer beat butter, vegetable oil, sugar, and salt. Add eggs, soda, cream of tartar, vanilla, lemon extract, and finally, flour. Mix well. Chill.

Make into small balls and press down on an ungreased cookie sheet with fork or small glass dipped in sugar.

Bake at 350 degrees for 10 minutes or until light brown. Do not overbake. Dough keeps well in freezer.

*Yields 6 dozen*

*By: Nan Smith Stewart*





## PLAIN ROLL-OUT COOKIES

*A Cook's Tour of Shreveport, p. 276*

*Cream together:*

2 sticks butter  
1/3 cup shortening  
1 cup white sugar  
1/4 teaspoon salt  
1 egg  
3 tablespoons milk  
1 teaspoon vanilla  
1/2 teaspoon lemon juice

*Sift together:*

3 1/2 cups flour sifted 4 times  
1 teaspoon soda  
1 teaspoon cream of tartar

Add dry ingredients to creamed ingredients slowly. Chill and roll out. Cook at 350 degrees until lightly brown.

This recipe is especially good for making decorative cookies.

*Makes approximately 3 dozen*

*By: Mrs. F. C. Boykin*



## WHITE CHOCOLATE RASPBERRY TART

*Mardi Gras to Mistletoe, p. 120*

12 ounces white chocolate  
1/2 cup heavy cream, heated  
1/4 cup (1/2 stick) unsalted butter,  
softened  
2 cups fresh raspberries  
1 baked graham cracker or  
pecan shortbread pie shell  
Raspberries

Melt the chocolate in a double boiler over simmering water until smooth, stirring occasionally. Stir in the warm cream and butter. Remove from heat.

Arrange 2 cups raspberries evenly over the bottom of the pie shell and pour the chocolate mixture over the raspberries. Chill for 1 hour or until firm. Garnish with additional raspberries.

Cut into bite-size pieces for an elegant cocktail buffet dessert.

*Serves 8*







## “EVERYTHING BUT THE KITCHEN SINK” BAR COOKIES

*Mardi Gras to Mistletoe, p. 156*

- 1 (18-ounce) roll refrigerator chocolate chip cookie dough
- 1 (7-ounce) jar marshmallow crème
- ½ cup creamy peanut butter
- 1 ½ cups Corn Chex
- ½ cup “M & M’s” Chocolate Candies

Pat the cookie dough over the bottom of a greased 9x13-inch baking pan. Bake at 350 degrees for 13 minutes.

Drop teaspoonfuls of the marshmallow crème and peanut butter over the top of the baked layer and bake for 1 minute.

Carefully spread the melted marshmallow crème and peanut butter over the top. Sprinkle with the cereal and chocolate candies and bake for 7 minutes longer.

Cool in the pan on a wire rack and cut into 2-inch bars.

*Makes 3 dozen bars*

## TURTLE CANDY

*Mardi Gras to Mistletoe, p. 107*

- 1 bag pretzel squares
- 2 (11-ounce) bags Rolos candies
- 1 ½ to 2 cups pecan halves

Arrange the pretzels in a single layer on a baking sheet. Top each pretzel with a candy. Bake at 250 degrees for 4 minutes. Press one pecan half into each candy. Chill in the refrigerator until ready to serve.

*Makes a variable amount*

For more information on Cookbook Bundles, reach out to Cookbook Chair Maggie Malone at (318) 469-8476 or magstern@bellsouth.net

## Advertiser Index

CHRISTUS Health.....	7
Garden Park .....	13
Graf Orthodontics .....	14
Lee Michaels .....	Back Cover
Mirammon Law.....	Inside Back Cover
Sid Potts .....	Inside Front Cover
Social Butterfly.....	21
Vintage Homes .....	29

318 Art and Garden Cookbook Display





# *New year, New you.*

YOU NEED THESE IMPORTANT  
DOCUMENTS. WHY WAIT?

- Will
- Power of Attorney
- Living Will
- Trust

We focus primarily in the field of estate planning and probate. We work with your financial advisor and CPA to determine which plan is right for you. Our initial consultation is free.

**Let our family help your family.**



Julia Miramon Todd

Patricia N. Miramon



**MIRAMON LAW, INC.**  
*estate planning & probate*

3324 LINE AVE SHREVEPORT, LA 71104

318-869-0055

**MIRAMONLAW.COM**

 JUNIOR LEAGUE OF  
**SHREVEPORT-BOSSIER**  
2601 LINE AVENUE  
SHREVEPORT, LOUISIANA 71104

PRSRT STD  
U. S. POSTAGE  
PAID  
Shreveport, LA  
Permit No. 856

Let Love *Sparkle*



*Lee Michaels*  
FINE JEWELRY & DISTINCTIVE GIFTS

YOUREE DRIVE AT EAST 70TH  
318-222-2929 • SHOP ONLINE AT LMFJ.COM