



ANNUAL REPORT

2019-2020

2019-2020 *Board of Directors*

Thank You TO THOSE WHO MAKE IT POSSIBLE

1933 SOCIETY

LEAGUE LEADERS

Lee O'Brien Davis
Katherine Douthitt
Kim Foret
Maureen Gamble
Peggy Murphy & Carolyn Thompson
Leslie Scott
Jodi Penn Rives
Mrs. Lacy Williams (Edie Broyles)

LEAGUE ADVOCATES

Katie Baker
Nancy H. Broyles
Nancy Cosse
Melinda A. Hernandez
Maggie McElroy
Patricia N. Miramon
The Moppet Shoppe
Peggy M. Lyons
Melanie Peacock
Betsy C. Peatross
Lindsey Pennington, MD
Heather Price
Saige Solomon
Jane Sugar, MD
Kelly Kilpatrick Turner

LEAGUE PARTNERS

Susan P. Adams
Anti-Pest / Michele Horton
Nikki Camhout
Lynn Chance
Helen E. DeBeaux
Michelle Everson
Melissa Flores
Jennifer Frierson
Paula Frierson
Sylvia K. Goodman
Elba Hamilton
Lisa Hargrove
Mary Jo Kayser
Hollisann J. Kent
Ginger Pugh Lukacs
Maggie Malone
Jodie McJunkins
Vickie Meadows
Angie Phares
Michele Q=Petersen
Evelyn H. Quinn
Janie Richardson

CORPORATE COMMUNITY PARTNERS

Christus Health System
Shreveport-Bossier
Sid Potts, Inc.
Parade of Homes /
NWLA Homebuilders Association

SUPER SAFETY SATURDAY SPONSORS AND COMMUNITY PARTNERS

Sheriff's Safety Town
Caddo Parish Commission
Commissioner Mario Chavez
Caddo Parish Sheriff's Office
SPAR
Ark-La-Tex Tent and Events
City of Shreveport
Red River Credit Union
Sysco
Wyndham Garden
Bayou Bounce
Shreveport Police Department
Shreveport Fire Department
SporTran
Life Air Rescue
Shreveport Tractor
Shreveport Diesel Driving Academy
Red Ball Oxygen
Rotag Services
American Red Cross
Shreveport Memorial Library
Shreveport Bossier Family Dental
Willis-Knighton Shots for Tots
Metro Aviation
Walter B. Jacobs
Memorial Nature Park
The Gingerbread House
Caddo Parish Animal Control
& Mosquito Services
B.A.C.A.
CarKeys
Learning Rx
Little Works in Progress
Centerpoint
Humphrey Racing
Louisiana State Police
Republic Services
KSLA
United States Postal Service

PUMPKIN PATCH SPONSORS

Provenance Realty Group
Lagniappe Lawnsapes
Sid Potts, Inc.
Lang Orthodontics
Barksdale Federal Credit Union
Ferris Office Smart, LLC
Gatti & Merkle
Southern Hills Animal Hospital
Erin Walker Family Dentistry
Gilmer & Giglio
Nelson & Hammons
P&S Pantry
Pediatric Dentistry of
Shreveport-Bossier -
Dr. Jason Gambill & Associates
Progressive Bank
Coca-Cola
El Cabo Verde
Frank's Louisiana Kitchen
Glenn Avenue Calligraphy
Jennifer Bradford Photography
Meghan Awalt Wedding Florist
Pediatric Dental Partners
KING CAKE CLASSIC SPONSORS
Pediatric Dental Partners
Lang Orthodontics
Southern Roots Dentistry
Friends of King Cake Classic
Walker-Alley & Associates
Quality Shades & Shutters
SWEPCO
J. Weiland Group Benefits
Pure Barre Shreveport
Family of King Cake Classic
Red River Brewpub
Lowder Baking Company
RunWild Racing
Popular Print
Sign Gypsies
Jennifer Bradford Photography

DESIGNER BAG BINGO

Horseshoe Bossier City
Sid Potts, Inc.
Lee Davis
Jodi Penn Rives -
Argent Trust Company
Brown Builders
B2WB
Progressive Bank
Red River Bank
Brookshire's
Lisa Hargrove
Jane Bicknell
Pam Cowen
Dillard's of Shreveport and Bossier
M. Clothes Shoes Lifestyle
Vickie Meadows
Clarke's Fine Jewelry

GIVE FOR GOOD DONORS

Margaret and
Thomas E. McElroy, Jr. Family Fund
Anna Priestley
Heather Price
Rebecca Radford
Saige Solomon
Carolyn Murphy
Katie Baker
Liz Lafitte
Cheryl Foster
Tracy Prestwood
Lucy Medvec

MISSION: The Junior League of Shreveport-Bossier, Inc. is an organization of women committed to promoting volunteerism, developing the potential of women, and improving communities through the effective action and leadership of trained volunteers. Its purpose is exclusively educational and charitable.

VISION: The Junior League: Women Around the World as Catalysts for Lasting Community Change.

OUR COMMITMENT TO DIVERSITY AND INCLUSION: The Junior League welcomes all women who value our Mission. We are committed to inclusive environments of diverse individuals, organizations, and communities.



LEADERSHIP & MEMBERSHIP

2019-2020 BOARD OF DIRECTORS

Photo: see page 17

President	Katherine Douthitt
President-Elect	Saige Solomon
Executive Vice President	Maggie Pressly
Secretary	Catherine Simpson
Treasurer	Laramie Guillot
Nominating Chairman	Heather Courtney
PR&D Chairman	Sarah Giglio
Active Member at Large	Hannah Alexander
Active Member at Large	Ali Smith
Sustainer at Large	Lee Davis
Sustainer Advisor	Jodi Penn Rives

2019-2020 MANAGEMENT TEAM

Photo: see below

Executive Vice President	Maggie Pressly
Communications Vice President	Shelvia Grant
Community Vice President	Jabrina Edwards
Membership Vice President	Margaret McDonald
Fund Development Vice President	Liz Lafitte
Assistant Treasurer	Michelle Wallace



2019-2020 SUSTAINER ADVISORY PANEL

Led by **Sustainer Advisor** Jodi Penn Rives and assisted by **Active member** Mollie Chelette
Members include: Kelly Turner, Jodie McJunkins, Nicole Camhout, Vickie Meadows, Leslie Scott, Toni Thompson, Peggy Murphy, Michelle Everson, and Lee Davis

2019-2020 COMMUNITY ADVISORY BOARD

The JLSB seeks out members of the community to serve as advisors lending their expertise in a variety of areas to the League. The JLSB was fortunate to have the following distinguished community leaders serve on the 2019-2020 Community Advisory Board.

Laura Alderman,
Executive Director,
Step Forward

Sonja Bailes,
Public Relations Liaison,
Bossier Parish
School Board

Renee Ellis,
Community Engagement
Specialist,
Caddo Parish
Public Schools

Kristi Gustavson,
Chief Executive Officer,
Community Foundation
of North Louisiana

Amy Heron,
Vice President and Chief
Development Officer,
CHRISTUS Health
System Foundation

Martha Marak,
Executive Director,
Food Bank of
Northwest Louisiana

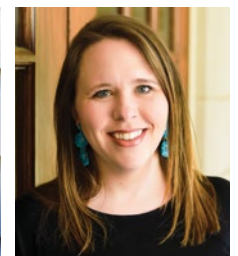
Chuck Meehan,
President and
Chief Executive Office,
Volunteers of America
of North Louisiana

Clay Walker,
Director of Juvenile
Services,
Caddo Parish



SERVICE AWARDS

Sustainer of the Year: Sybil Patten
Volunteer of the Year: Stacey Melerine
President's Awards: Melissa Airhart & Liz Lafitte



SCHOLARSHIP RECIPIENTS

Jennifer Langston
and Lillie Johnston



COMMUNITY IMPACT

HEALTH LITERACY INITIATIVE

This year the Junior League partnered with the Salvation Army's Boys & Girls Club to bring this program to school-age children during the summer months. Health Literacy Initiative promotes healthy lifestyle choices to students. Members act as health educators teaching children about fitness, tobacco use prevention, animal safety, nutrition, stranger danger, fire prevention, table manners, good financial practices, and oral health. Volunteers also provide crafts and healthy, fun snacks that are related to the theme of each session.

SUPER SAFETY SATURDAY

In partnership with Sheriff's Safety Town, the Junior League of Shreveport-Bossier coordinated our 10th annual Super Safety Saturday event. Over 1,000 people including children and families, local nonprofit organizations, government agencies, and members of law enforcement attended this free community event. In the Health and Safety Fair tents, participants learned about various health and safety issues through interactive games and handouts. The Touch-a-Truck area included a helicopter, boats, and fire trucks as well as many other emergency, construction, transport, waterway, and military vehicles. Participants were able to see these vehicles up close and climb in for an even closer look. The Family Fun Zone was filled with games, prizes, and music, bringing the fun to the safety fair. Bicycle, storm, and water safety were presented by deputies in the kid-sized "city" of Safety Town. The event was rounded out with a child seat inspection and bike rodeo hosted by the Caddo Parish Sheriff's Office.

RED RIVER REVEL "ARTIST FOR A DAY"

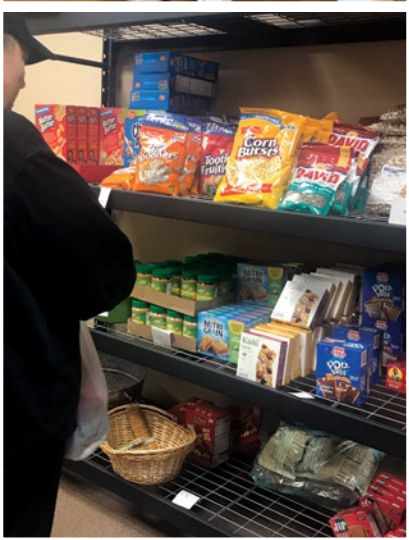
Each weeknight and all day on the weekends during the Red River Revel, Junior League volunteers can be found in the "Artist for a Day" tent in the children's area. Volunteers assist children with fun and creative projects that enable children to exercise their artistic skills. The Artist for a Day project provides a free activity for children and their families at the Revel to help ensure that children in our community have an opportunity to participate directly in the arts.





RED APRON PANTRY

A partnership with the Food Bank of Northwest Louisiana, our Red Apron Pantry is a food pantry operated at JLSB Headquarters providing supplemental nutrition to households, enabling our League to continue the important work of combatting food insecurity in our community. Our unique “client’s choice” model allows families to select available food items from our shelves, just like a traditional grocery store. During its second year, our dedicated volunteers worked hard to expand the pantry offerings to provide frozen food items, including a variety of meats and protein options, as well as provide healthful recipes utilizing food made available and other health-related information. During the first months of the pandemic, our Red Apron Pantry was one of the only food pantries operating in our area, when more families than ever before needed food assistance. By the conclusion of the year, we increased our households served by nearly 300%.



SAFE SITTER

The Safe Sitter Program prepares teens, age 12-17, to be effectively trained babysitters. All too often, older children are left home to look after other children of all ages with little or no training to do so. Volunteers in this program teach the participants about the basics of child-care, first aid, Heimlich maneuver, general safety, and even how to start their own babysitting business. This program was not only taught to participants in our MAGIC program but also in partnership with other community organizations.



MAGIC

MAGIC: Mentoring Ambitious Girls to Inspire Change provides opportunities for our members to interact with girls in our community twice a month and educate them on a variety of topics including financial literacy, healthy relationships, nutrition, etiquette, and volunteerism. This year, we partnered with the Volunteers of America Teen Club and these interactive programs helped the girls learn to navigate society, encourage study, and build self-confidence, among other lessons.

FUND DEVELOPMENT



1933 SOCIETY

This year we continued our fourth year of raising money through our annual fund—the 1933 Society. It provides our donors a more structured way to support the League. This year's 1933 Society members were treated to a lovely party at the home of Jodi Penn Rives with special guest Olivia Thomas, ALJI Treasurer. We are forever grateful for the outpouring of support and the continued belief in the Junior League of Shreveport-Bossier mission. **Net Profit: \$22,100**



COOKBOOK SALES

Our longest running source of income comes from cookbook sales. We are pleased to offer three unique books including the award-winning *Mardi Gras to Mistletoe* featuring 12 months of festivals, events, and more than 200 seasonal recipes. *Revel*, originally published in 1980 and then reissued in a 20th anniversary edition in 2000, has sold over 50,000 copies and includes party menus for each of the four seasons. Finally, *A Cooks Tour*, originally published in 1964, features dishes elegant enough for fine dinner parties and casual enough for picnics, and is truly a journey back into your grandmother's kitchen. **Net Profit: \$2,500**



PARADE OF HOMES

This year we partnered with the NWLA Homebuilder's Association and the Parade of Homes to sell Win a Kitchen! raffle tickets at various homes on the Parade. Raffle tickets were \$50 each, and there were many secondary prizes in addition to the Grand Prize kitchen remodel. **Net Profit: \$10,000**



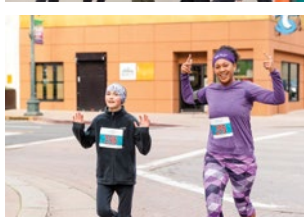
RED RIVER REVEL PEPSI SALES

The now world-famous Red River Revel Arts Festival was founded by the Junior League of Shreveport-Bossier, Inc. and given to the City of Shreveport in 1976 as a bicentennial gift. The Revel is held annually in October on the Shreveport riverfront and attracts thousands of visitors to the area. The Junior League continues to support the Revel by providing over 500 volunteer hours selling Pepsi products during the festival. **Net Profit: \$5,050**



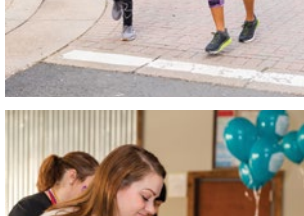
JUNIOR LEAGUE PUMPKIN PATCH AT PROVENANCE

This year we held our third annual Pumpkin Patch at Provenance. We provide free fall fun for the whole family, such as craft projects, movie nights, storytelling, and hayrides. We were also able to raise funds for the League through generous sponsorships and the sale of pumpkins. This year, everyone who purchased \$50 or more in pumpkins was entered in a drawing for a chance to win a beautiful diamond band from Sid Potts! **Net Profit: \$12,600**



KING CAKE CLASSIC – 10K, 5K AND FUN RUN

The King Cake Classic has become the signature racing event of the Junior League. The third King Cake Classic had over 300 participants. This year's race began and ended at Red River Brewpub. The route took runners through historic Downtown Shreveport. The family focused race day experience included live music, Lowder King Cake, Red River Brewpub Craft beer, a kid's activities and craft area, and Mardi Gras bead medals and more. There was a fantastic turnout and lots of fun for all. **Net Profit: \$10,400**



DESIGNER BAG BINGO

Our third Designer Bag Bingo event was unfortunately cancelled due to the COVID-19 pandemic. Many thanks to the DBB committee for their hard work preparing for this event. We hope you will all join us next spring for the next Designer Bag Bingo! **Net Profit: \$17,100**



GIVE FOR GOOD DAY

The Junior League partnered with the Community Foundation and participated in Give for Good Day. The 24-hour online giving challenge raises unrestricted funds for nonprofits in our community. This day of giving celebrates local nonprofits and allows the community an opportunity to support these valuable programs and organizations. Part of the JLSB's mission is to promote voluntarism and improve communities, and participating in Give for Good is one way we celebrated generosity and elevated the conversation about philanthropy in the Shreveport-Bossier community. **Net Profit: \$885**

FINANCIAL REPORT

TREASURER'S REPORT

ASSETS

Cash and cash equivalents	\$567,275
Accounts receivable	\$0
Inventory	\$57,200
Property and equipment	\$444,000
Long-Term Investments	\$10,000

TOTAL ASSETS \$1,078,475

LIABILITIES AND NET ASSETS

Long-term debt	\$0
Accounts payable and accrued expenses	\$0
Deferred revenue	\$44,000

TOTAL LIABILITIES \$44,000

NET ASSETS \$1,034,475

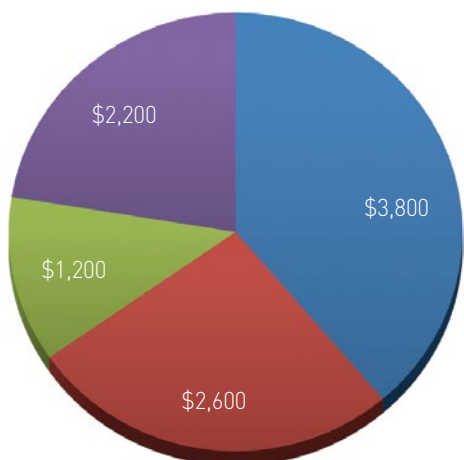
TOTAL LIABILITIES AND NET ASSETS \$1,078,475

CAP GRANTS

The Junior League of Shreveport-Bossier operates a Community Assistance Program (CAP) whose purpose is to provide monetary grants for short-term critical needs of nonprofits in the Shreveport-Bossier area.

2018-2019 CAP GRANT RECIPIENTS

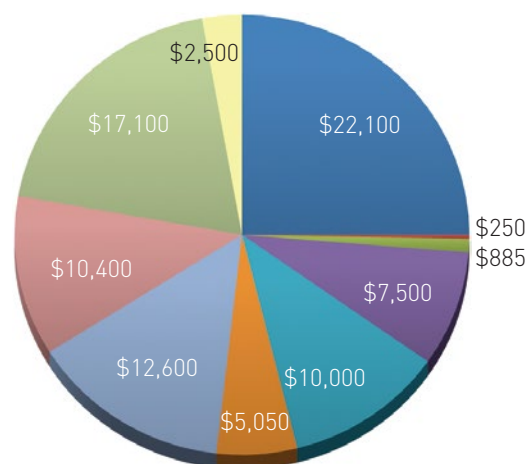
Bossier Council on Aging	\$1,787
Dress for Success Shreveport-Bossier	\$2,800
	<u><u>\$4,587</u></u>



Member Training, Education, & Engagement

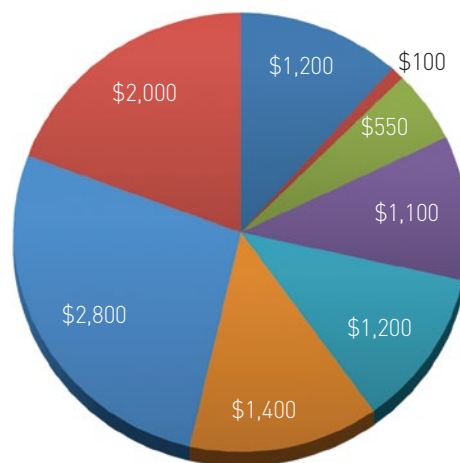
AJLI Winter Conference	\$3,800
JLSB New Member Training	\$2,600
JLSB Member Training and Education	\$1,200
Sustainer Engagement	\$2,200

Fund Development



1933 Society Sponsorship	\$22,100
Individual Donations	\$250
Give for Good Donations	\$885
Corporate Donations	\$7,500
Parade of Homes	\$10,000
Red River Revel Pepsi Commission	\$5,050
Pumpkin Patch (net)	\$12,600
King Cake Classic (net)	\$10,400
Designer Bag Bingo (net)	\$17,100
Cookbook Sales	\$2,500

Community Projects



Community Assistance Grants	\$1,200
Health Literacy Initiative	\$100
MAGIC (Mentoring Ambitious Girls to Inspire Change)	\$550
Red Apron Pantry	\$1,100
Red River Revel Arts Education	\$1,200
Safe Sitter (net)	\$1,400
Super Safety Saturday	\$2,800
Scholarships	\$2,000